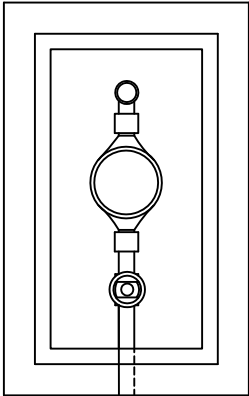


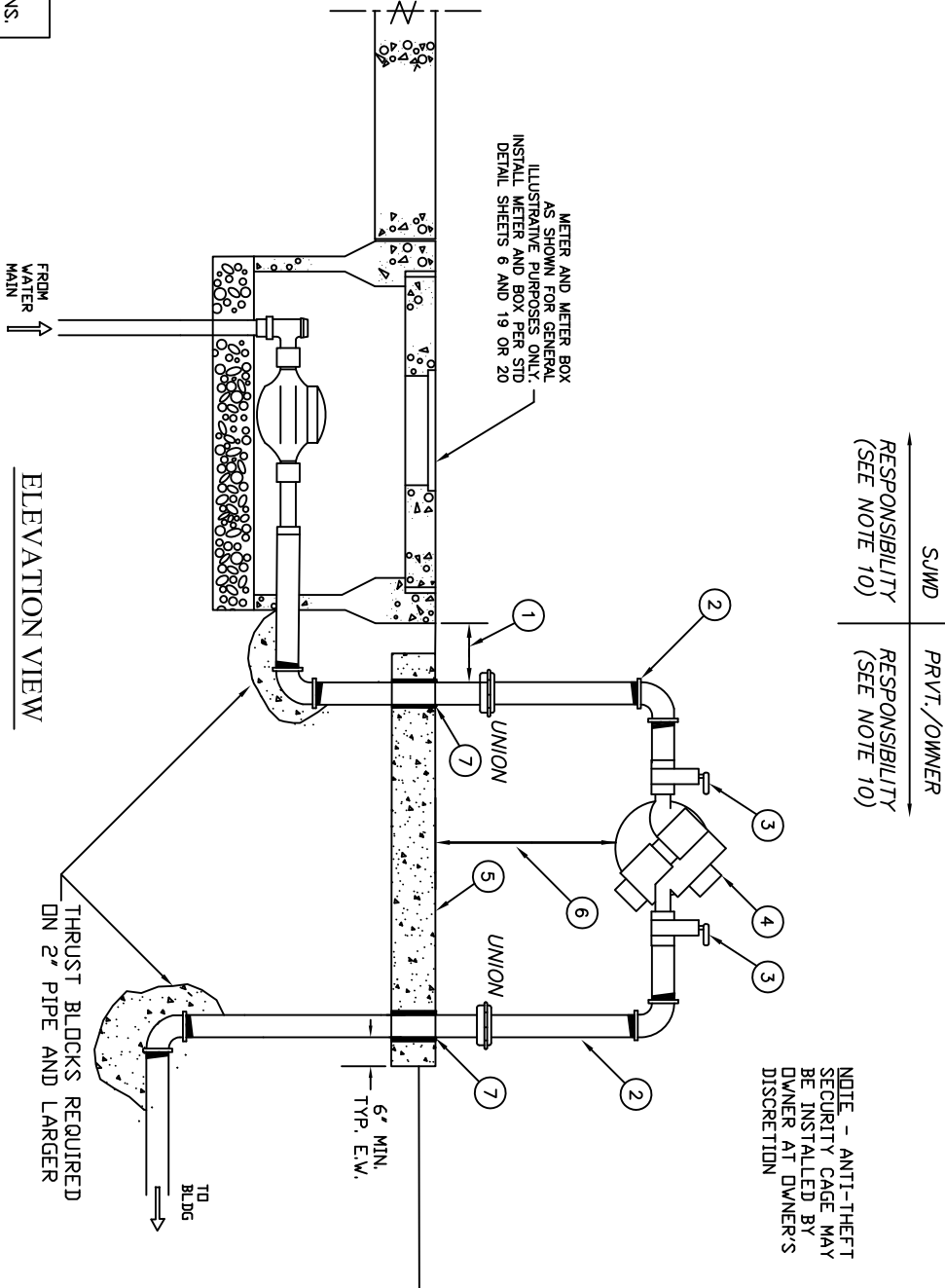
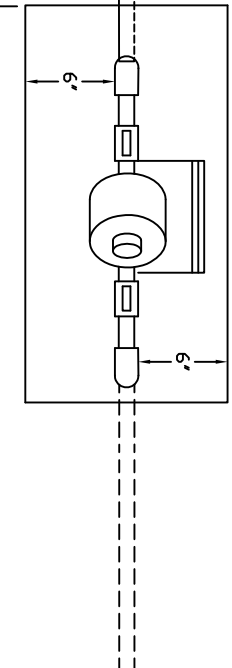
NOTES:

1. DISTANCE FROM METER BOX TO BACKFLOW DEVICE RISER SHALL BE 8-INCHES MAXIMUM UNLESS OTHERWISE APPROVED BY THE SJWD INSPECTOR OR AUTHORIZED SJWD REPRESENTATIVE. IN ALL CASES THERE SHALL NOT BE ANY TEES, OUTLETS OR CONNECTIONS BETWEEN THE METER AND THE BACKFLOW DEVICE.
2. ALL PIPING FROM METER TO BEYOND BACKFLOW DEVICE CONCRETE PAD SHALL BE TYPE "K" COPPER OR BRASS.
3. RESILIENT SEAT BALL VALVE
4. RPP BACKFLOW DEVICE (GEBCO LF825Y, WILKINS 975 XL2, OR DISTRICT APPROVED EQUIVALENT).
5. 4-INCH THICK CONCRETE PAD, LENGTH TO PROVIDE 6-IN BEYOND PIPING ON ALL SIDES.
6. 12-INCH MIN TO 20-INCH MAXIMUM CLEARANCE.
7. PROVIDE EXPANSION SLEEVES AROUND ALL PIPE PENETRATIONS THROUGH CONCRETE SLAB.
8. INSULATE ALL ABOVE GROUND PIPING WITH "WEATHERGUARD" INSULATION BLANKET OR DISTRICT APPROVED EQUIVALENT SUITED FOR EXPOSURE.
9. BACKFLOW PREVENTER TO BE TESTED BY A SAN JUAN WATER DISTRICT CERTIFIED TESTER AT TIME OF WATER SERVICE TURN ON.
10. BACKFLOW PREVENTER MAINTENANCE REPAIR AND REPLACEMENT SHALL BE THE RESPONSIBILITY OF THE CUSTOMER. ANNUAL TESTING SHALL BE THE RESPONSIBILITY OF THE DISTRICT UNLESS OTHERWISE INDICATED BY THE DISTRICT.

NOTE - REFERENCE DETAIL SHEET 4 FOR ADDITIONAL INFORMATION ON RESIDENTIAL FIRE SERVICE INSTALLATIONS.



PLAN VIEW



SJWD RESPONSIBILITY (SEE NOTE 10) | PRVT./OWNER RESPONSIBILITY (SEE NOTE 10)

NOTE - ANTI-THEFT SECURITY CAGE MAY BE INSTALLED BY OWNER AT OWNER'S DISCRETION

NO.	DATE	REVISIONS DESCRIPTION	APP	BY



1" & 2" REDUCED PRESSURE BACKFLOW PREVENTER INSTALLATION
 SAN JUAN WATER DISTRICT

APPROVED (FOR SJWD) _____
 RDB WATSON, P.E. ENGINEERING SERVICES MANAGER
 SCALE: NTS | PRINT DATE: 06/23/16 | DETAIL NO. SHT 21 OF 27