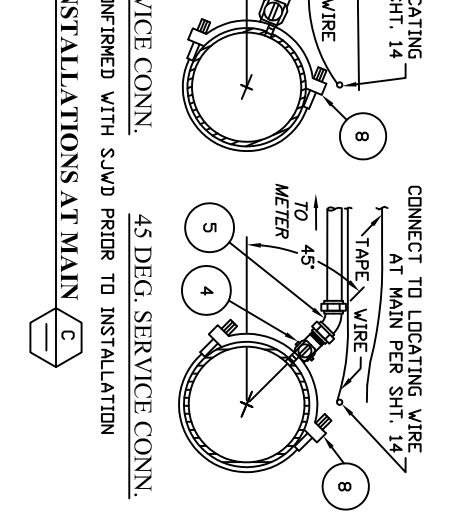
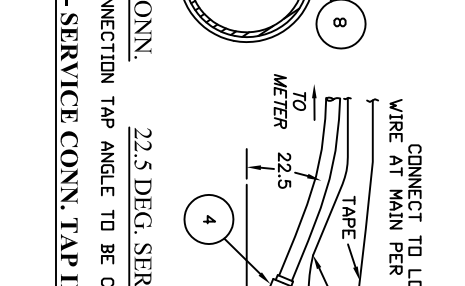
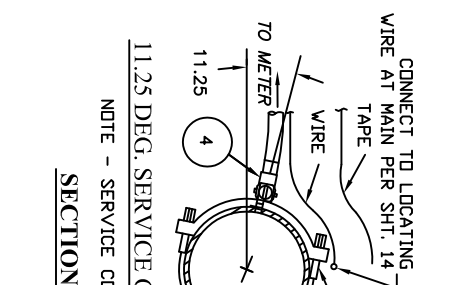
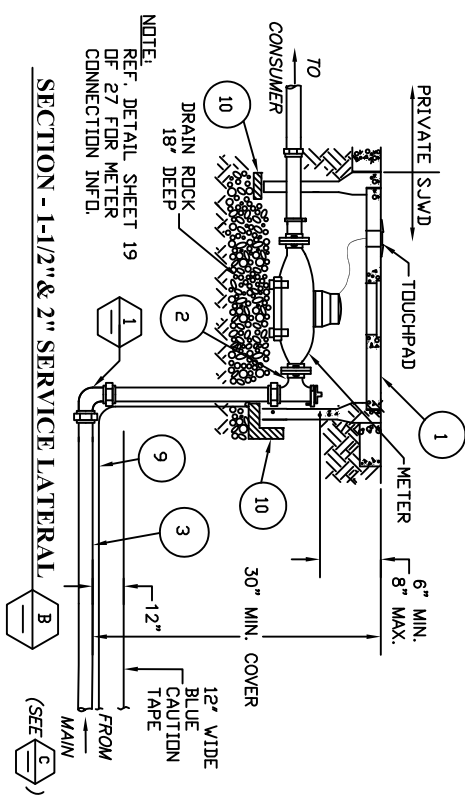
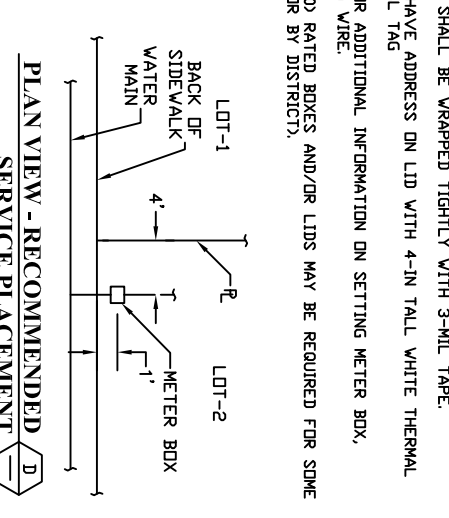
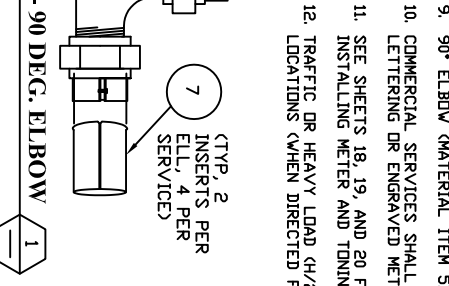
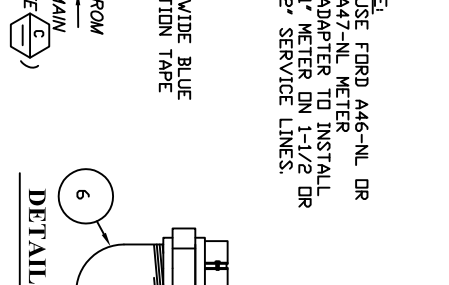
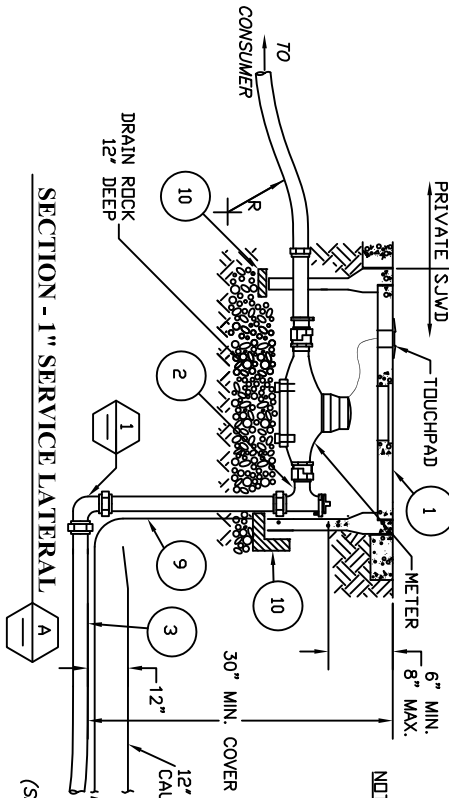


SERVICE MATERIALS DESCRIPTION AND PARTS/MODEL NUMBERS

1	METER BOX (REF. NOTE 12)	1" SERVICE B-16 BOX W/B-16CP LID AND PW/TRPL PLUG	1-1/2" SERVICE B-36 BOX W/A36RP LID FOR NON-TRAFFIC AREAS, OR G-45CP LID AND PW/TRPL PLUG FOR TRAFFIC AREAS	2" SERVICE B-36 BOX W/A36RP LID FOR NON-TRAFFIC AREAS, OR G-70CP LID AND PW/TRPL PLUG FOR TRAFFIC AREAS
2	ANGLE METER VALVE	FORD BA63-444W-NL	FORD BR443-666W-NL	FORD BR443-777W-NL
3	SERVICE LINE	1" POLYETHYLENE TUBE, IPS FB1101-4-NL (USE FB900 W/ 45 DEG.)	1-1/2" POLYETHYLENE TUBE, CTS FB1100-6-NL (USE FB900 W/ 45 DEG.)	2" POLYETHYLENE TUBE, CTS FB1100-7-NL (USE FB900 W/ 45 DEG.)
4	CORP. STOP	FORD LA14-54-NL	FORD LA14-76-NL	FORD LA14-87-NL
5	45 DEG. ELBOW	FORD L66-44-NL	FORD L44-66-NL	FORD L44-77-NL
6	90 DEG. ELBOW (REQUIRED)	FORD L66-44-NL	FORD L44-66-NL	FORD L44-77-NL
7	INSERT STIFFENERS	FORD S3-72	FORD S4	FORD S5
8	SERVICE SADDLE (FOR ALL SIZES)	DIP. ACP & STL - JONES 979 C-900 PVC - JONES 996	DIP. ACP & STL - JONES 979 C-900 PVC - JONES 996	DIP. ACP & STL - JONES 979 C-900 PVC - JONES 996
9	LOCATING WIRE	10 GA COPPER (INSULATED)	10 GA COPPER (INSULATED)	10 GA COPPER (INSULATED)
10	CONC. OR BRICK BLOCKING	2" X 4"	2" X 4"	2" X 4"

NOTES:

- THE MANUFACTURER AND MODEL NUMBER LISTED IN THE SCHEDULE OF MATERIALS IS FOR CONVEYANCE IN DESIGNATION, SUBSTITUTION MAY BE MADE WITH THE PRIOR APPROVAL OF THE DISTRICT.
- FOR CONNECTION TO MAIN SEE DISTRIBUTION MAIN SERVICE CONNECTIONS - 1" THROUGH 2" DETAIL, SHEET 7.
- SET METER BOX PERPENDICULAR TO STREET AND ELEVATION FLUSH WITH LOT FINISH GRADE. LOCATE BOX 1 FOOT FROM BACK OF SIDEWALK. SEE RECOMMENDED PLACEMENT PLAN FIGURE (E), GRADE AREA TO DRAIN AWAY FROM BOX.
- USE INSERT STIFFENER, ITEM 6 IN SCHEDULE OF MATERIALS, FOR EACH PACK JOINT.
- SADDLES TO BE INSTALLED MIN. 18" FROM PIPE COUPLING OR ADJACENT SADDLES.
- PIPE TRENCHING DETAILS SEE SHEET 11 (SAND BACK FILL MATERIAL IS REQUIRED).
- MINIMUM RADIUS (R) OF PIPE/LINE TO BE 2X PIPE MANUFACTURER'S RECOMMENDATIONS.
- ALL COMMERCIAL SERVICES TO BE PLACED IN PLANTER AREAS. LANDSCAPING SHALL NOT BLOCK EASY VISIBILITY OR ACCESS TO METER BOX. LANDSCAPING (SHRUBS) SHALL NOT BE PLACED CLOSER THAN 3-FT FROM METER BOX; TREES NO CLOSER THAN 10-FT TO BOX.
- 90° ELBOW (MATERIAL ITEM 5) SHALL BE WRAPPED TIGHTLY WITH 3-MIL TAPE.
- COMMERCIAL SERVICES SHALL HAVE ADDRESS ON LID WITH 4-IN TALL WHITE THERMAL LETTERING OR ENGRAVED METAL TAG
- SEE SHEETS 18, 19, AND 20 FOR ADDITIONAL INFORMATION ON SETTING METER BOX, INSTALLING METER AND TONING WIRE.
- TRAFFIC OR HEAVY LOAD (H/20) RATED BOXES AND/OR LIDS MAY BE REQUIRED FOR SOME LOCATIONS (WHEN DIRECTED FOR BY DISTRICT).



NOTE:
REF. DETAIL SHEET 19
OF 27 FOR METER
CONNECTION INFO.

NOTE - SERVICE CONNECTION TAP ANGLE TO BE CONFIRMED WITH S.W.D. PRIOR TO INSTALLATION

1", 1-1/2" & 2" SINGLE SERVICE LATERAL ASSEMBLY

SAN JUAN WATER DISTRICT

NO.	DATE	REVISIONS	APP.	BY

APPROVED _____

SCALE: _____ PRINT DATE: 08/29/13 DETAIL NO. SHIT 6 OF 27

